

250 SOUTH OAK WAY
4,594-17,060 SQ FT





SPECIFICATION INCLUDES

- VRF air conditioning
- Full access raised floors
- Suspended ceiling
- Showers and bike racks
- Two x 1,000kg capacity passenger lifts
- Manned reception
- 24 hour security on the Park
- EPC – D (94)



250 SOUTH OAK WAY

250 South Oak Way is a stylish headquarters building with feature glass elevations.

This modern, sensitively designed building has plenty of outside space, including a completely remodelled entrance and atrium, to give a sense of community. Transport facilities are particularly good, with ample parking and bicycle racks.



AVAILABLE SPACE

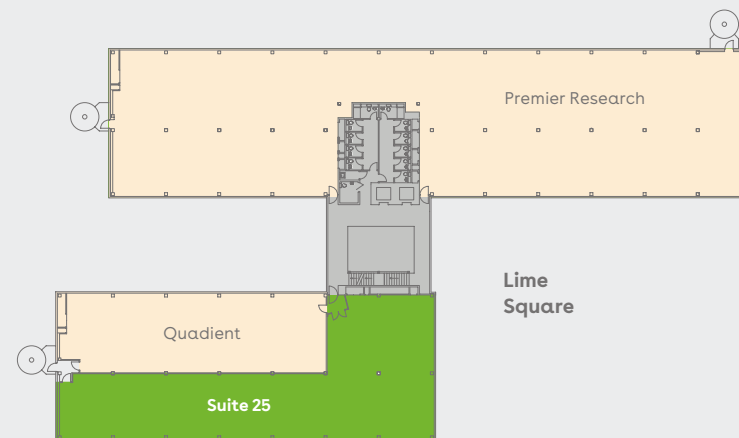


Schedule of availability		sq ft	sq m	Parking
Second floor	Suite 25	4,594	427	16
Ground floor	Suite 7	7,655	711	24
Ground floor	Suite 1	4,811	447	15
Total		17,060	1,585	55

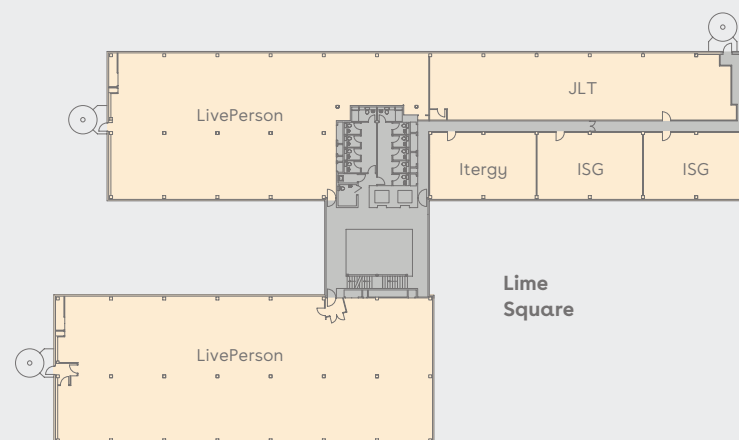
Current occupiers of 250 South Oak Way



Second floor

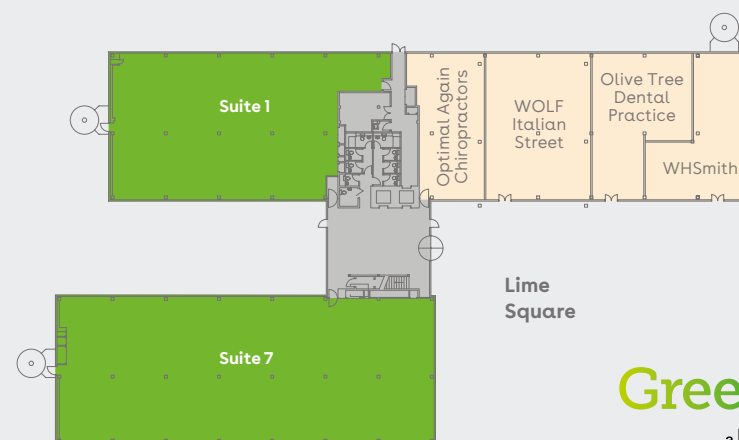


First floor

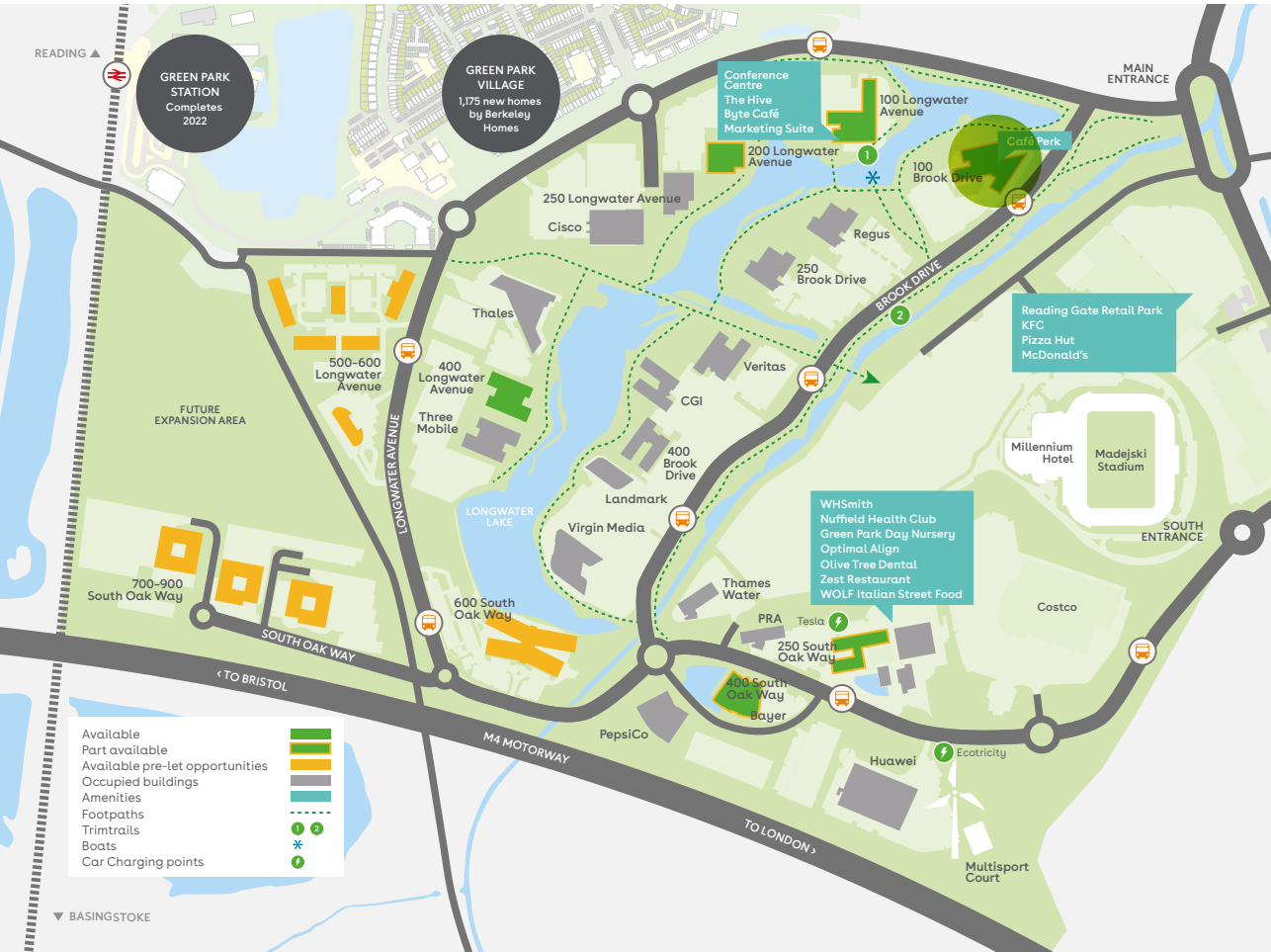


Office space to let
Let

Ground floor



For indicative purposes only. Not to scale.



Find out more about bringing your business to Green Park. Contact our appointed leasing agents or visit: greenpark.co.uk



[VIEWCAST ONLINE VIRTUAL TOUR](#)

These particulars are not an offer or contract, nor part of one. Any information given is entirely without responsibility or warranty whatsoever. November 2021.



Charles Dady
+44 (0)20 7152 5273
+44 (0)7793 808 273

Henry Harrison
+44 (0)20 7152 5403
+44 (0)7785 222 430

James Goodwin
+44 (0)20 7152 5016
+44 (0)7717 652 803



Keith Wise
+44 (0)118 959 7555
+44 (0)7802 946 166

Duncan Campbell
+44 (0)118 959 7555
+44 (0)782 734 1503

Rob Marson
+44 (0)118 959 7555
+44 (0)7778 467781

Jake Booth
+44 (0)118 959 7555
+44 (0)7469 150 877