

# 250 SOUTH OAK WAY

4,594-17,379 SQ FT



GreenPark   
a mapletree property



#### SPECIFICATION INCLUDES

- VRF air conditioning
- Full access raised floors
- Suspended ceiling
- Showers and bike racks
- Two x 1,000kg capacity passenger lifts
- Manned reception
- 24 hour security on the Park
- EPC - D (94)



## 250 SOUTH OAK WAY

250 South Oak Way is a stylish headquarters building with feature glass elevations.

This modern, sensitively designed building has plenty of outside space, including a completely remodelled entrance and atrium, to give a sense of community. Transport facilities are particularly good, with ample parking and bicycle racks.





AVAILABLE SPACE

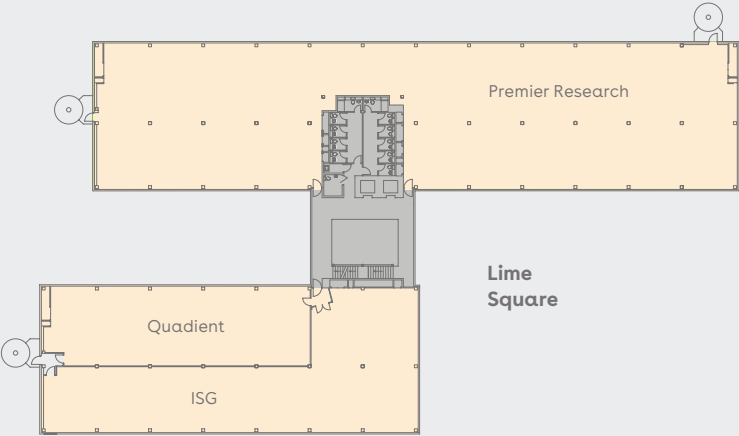


Schedule of availability		sq ft		sq m	Parking
First floor	Suites 13 & 14	2,103		195	6
First floor	Suites 9-11	2,810		261	8
Ground floor	Suite 7	7,655		711	24
Ground floor	Suite 1	4,811		447	15
Total		17,379		1,615	53

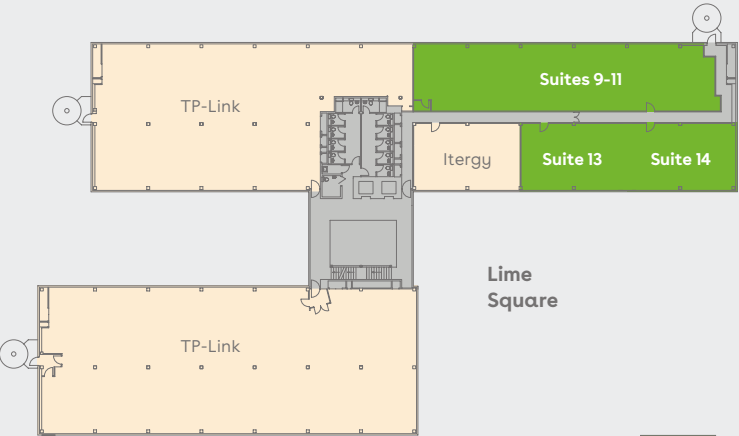
Current occupiers of 250 South Oak Way



Second floor

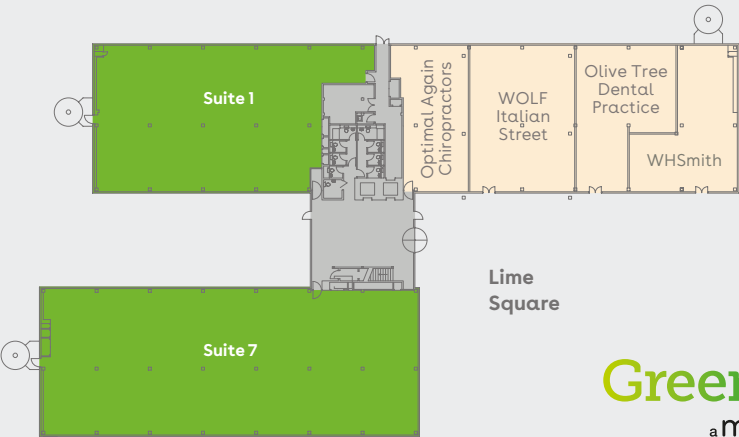


First floor



Office space to let  
Let

Ground floor



For indicative purposes only. Not to scale.

