

**250 SOUTH OAK WAY**  
**5,302-24,896 SQ FT**

**GreenPark**   
a mapletree property



## 250 SOUTH OAK WAY

250 South Oak Way is a stylish headquarters building with feature glass elevations.

This modern, sensitively designed building has plenty of outside space, including a completely remodelled entrance and atrium, to give a sense of community. Transport facilities are particularly good, with ample parking and bicycle racks.



### SPECIFICATION INCLUDES

- VRF air conditioning
- Full access raised floors
- Suspended ceiling
- Showers and bike racks
- Two x 1,000kg capacity passenger lifts
- Manned reception
- 24 hour security on the Park
- EPC – D (94)





AVAILABLE SPACE

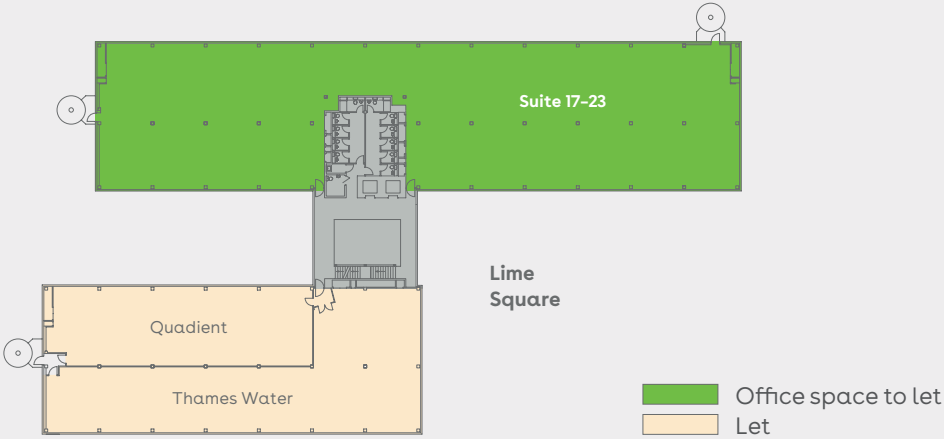


Schedule of availability		sq ft	sq m	Parking
Second floor	Suite 17-23	11,939	1,109	38
First floor	Suite 8	5,302	493	17
Ground floor	Suite 7	7,655	711	24
Total		24,896	2,313	79

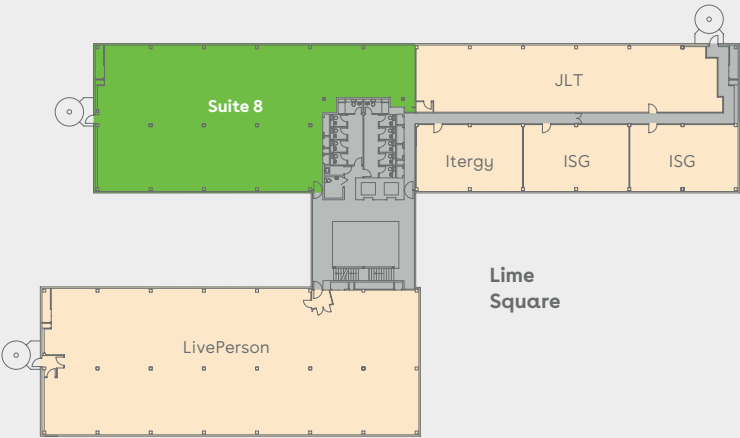
Current occupiers of 250 South Oak Way



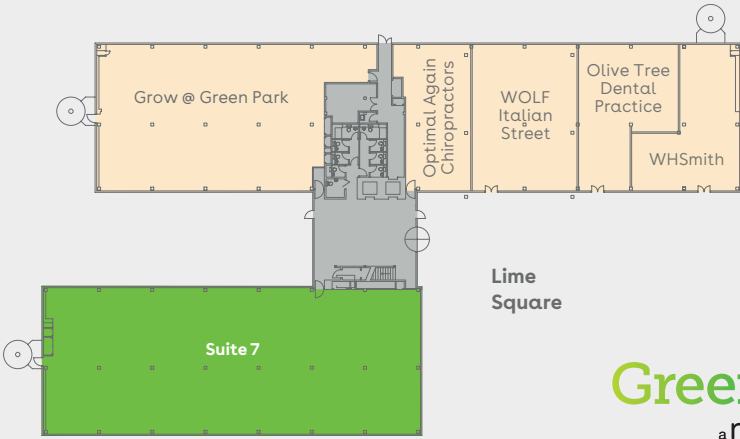
Second floor



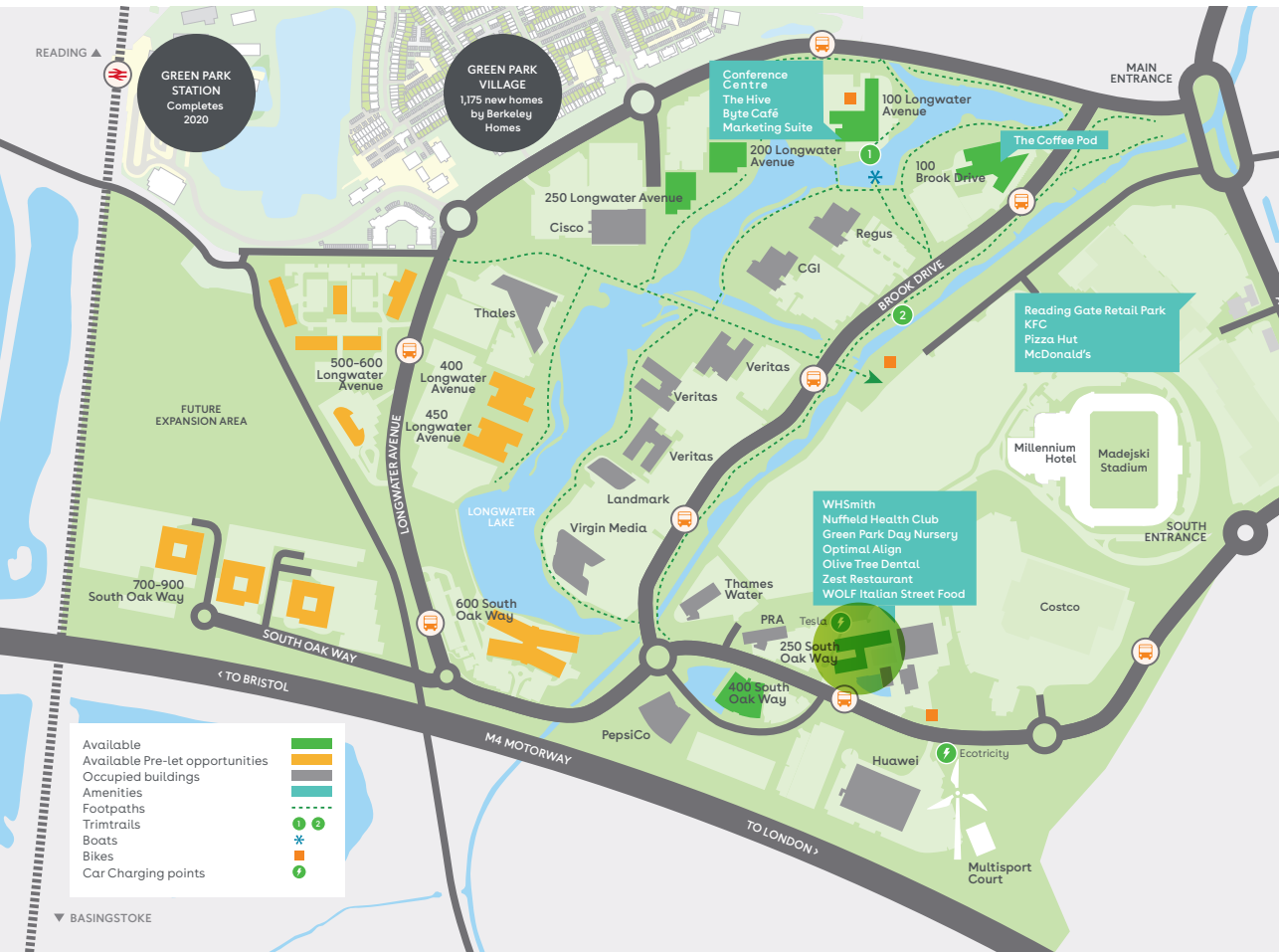
First floor



Ground floor



For indicative purposes only. Not to scale.



**Charles Dady**  
+44 (0)20 7152 5273  
+44 (0)7793 808 273

**Henry Harrison**  
+44 (0)20 7152 5403  
+44 (0)7785 222 430

**Cameron Frazer**  
+44 (0)20 7152 5425  
+44 (0)7710 965 302



**Keith Wise**  
+44 (0)118 959 7555  
+44 (0)7802 946 166

**Duncan Campbell**  
+44 (0)118 959 7555  
+44 (0)782 734 1503

**Charlie Benn**  
+44 (0)118 959 7555  
+44 (0)7551 159 738

Find out more about bringing your business to Green Park. Contact our appointed leasing agents or visit: [greenpark.co.uk](http://greenpark.co.uk)

These particulars are not an offer or contract, nor part of one. Any information given is entirely without responsibility or warranty whatsoever. June 2019.