

400 SOUTH OAK WAY
9,737-19,643 SQ FT



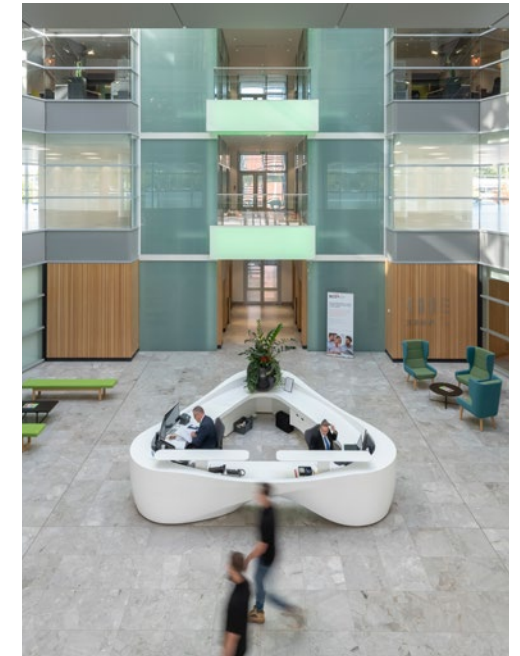
GreenPark 
a mapleiree property



400 SOUTH OAK WAY

Overflowing with natural light from floor-to-ceiling windows, this versatile headquarters gives your staff an inspiring space to work.

It's highly visible from the M4 - amplifying your business presence.



SPECIFICATION INCLUDES

- Four pipe fan coil air conditioning
- Fully accessible raised floors
- LED lighting
- Flexible range of CAT A finishes available
- Car parking ratio of 1:248 sq ft
- Showers and bike racks
- Four x 13 person glass scenic lifts
- One goods lift
- Imposing full height atrium
- 24 hour security on the Park
- BREEAM Excellent
- EPC - B



AVAILABLE SPACE

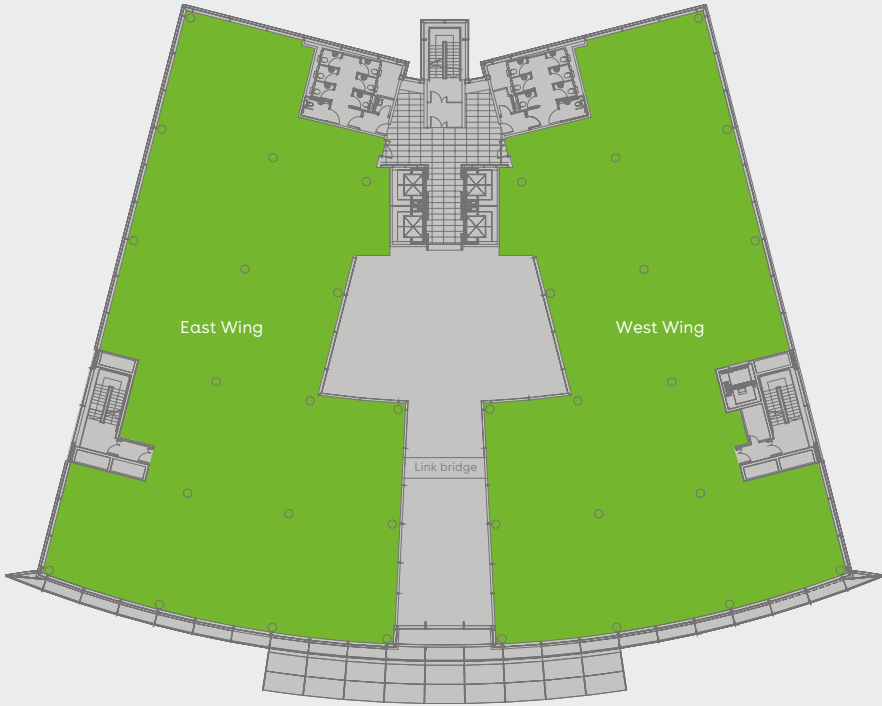


Schedule of availability		sq ft	sq m	Parking
First floor	East Wing	9,906	920	40
	West Wing	9,737	905	39
Total		19,643	1,825	79

Current occupiers of 400 South Oak Way



First floor



For indicative purposes only. Not to scale.



Find out more about bringing your business to Green Park. Contact our appointed leasing agents or visit: greenpark.co.uk



VIEWCAST ONLINE VIRTUAL TOUR

These particulars are not an offer or contract, nor part of one. Any information given is entirely without responsibility or warranty whatsoever. December 2022.

maple^{tree}



Charles Dady
+44(0)2071525273
+44(0)7793808273

Henry Harrison
+44(0)2071525403
+44(0)7785222430

James Goodwin
+44(0)2071525016
+44(0)7717652803



Duncan Campbell
+44(0)1189597555
+44(0)7827341503

Rob Marson
+44(0)1189597555
+44(0)7778467781

Jake Booth
+44(0)1189597555
+44(0)7714388044