

400 SOUTH OAK WAY
9,737-19,643 SQ FT



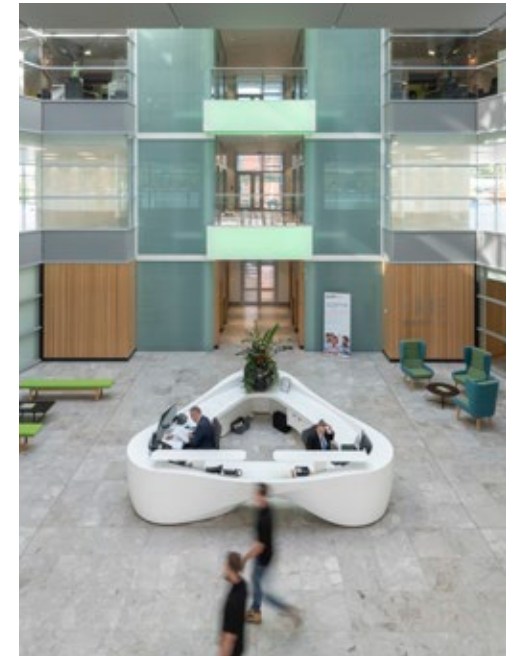
GreenPark 
a mapletree property



400 SOUTH OAK WAY

Overflowing with natural light from floor-to-ceiling windows, this versatile headquarters gives your staff an inspiring space to work.

It's highly visible from the M4 - amplifying your business presence.



SPECIFICATION INCLUDES

- Four pipe fan coil air conditioning
- Fully accessible raised floors
- LED lighting
- Flexible range of CAT A finishes available
- 400 car parking spaces (1:247 sq ft)
- Showers and bike racks
- Four x 13 person glass scenic lifts
- One goods lift
- Imposing full height atrium
- 24 hour security on the Park
- BREEAM Excellent
- EPC - B



AVAILABLE SPACE

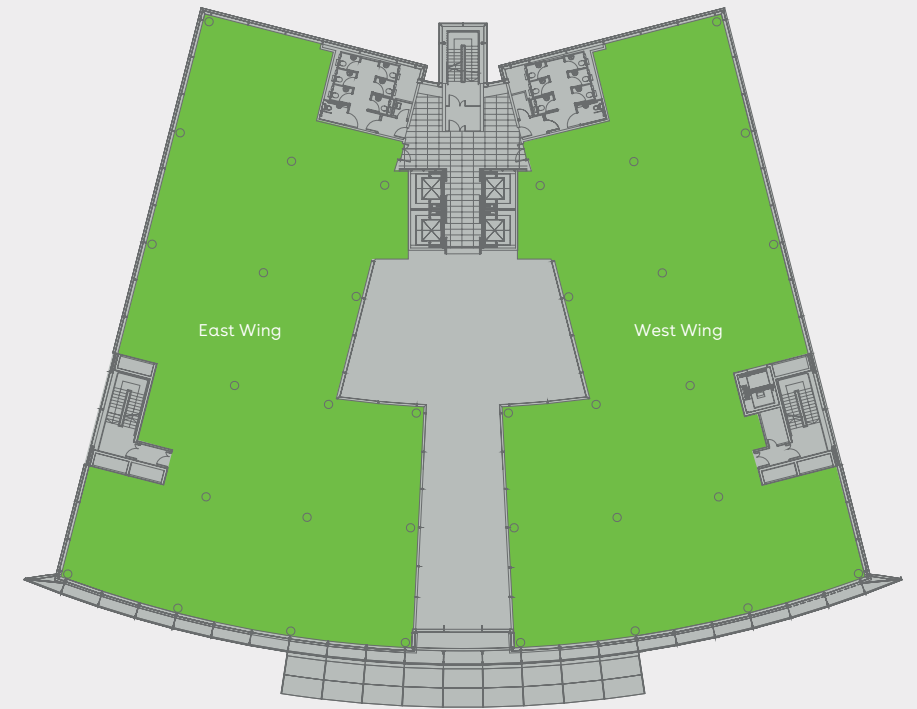


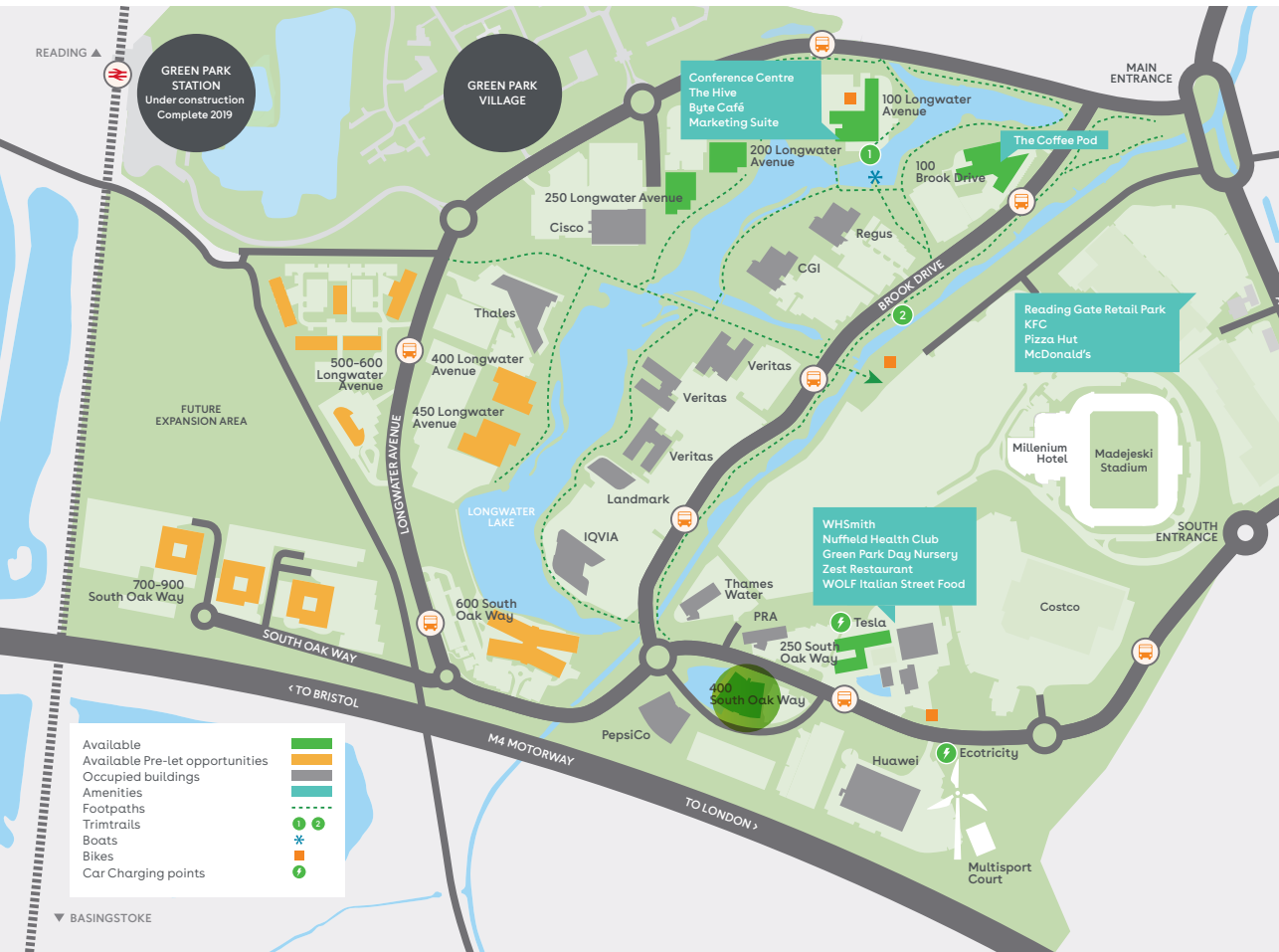
Schedule of availability		sq ft	sq m	Parking
First floor	East Wing	9,906	920	40
	West Wing	9,737	905	39
Total		19,643	1,825	79

Current occupiers of 400 South Oak Way



First floor





Find out more about bringing your business to Green Park. Contact our appointed leasing agents or visit: greenpark.co.uk

These particulars are not an offer or contract, nor part of one. Any information given is entirely without responsibility, October 2018.

a **maple**tree property



Charles Dady
+44 (0)20 7152 5273
+44 (0)7793 808 273

Henry Harrison
+44 (0)20 7152 5403
+44 (0)7785 222 430

Cameron Frazer
+44 (0)20 7152 5425
+44 (0)7710 965 302



Keith Wise
+44 (0)118 959 7555
+44 (0)7802 946 166

Alice Hilliard
+44 (0)118 959 7555
+44 (0)7557 280 885

Charlie Benn
+44 (0)118 959 7555
+44 (0)7551 159 738