

250 SOUTH OAK WAY

4,594-29,490 SQ FT



GreenPark 
a mapletree property



250 SOUTH OAK WAY

250 South Oak Way is a stylish headquarters building with feature glass elevations.

This modern, sensitively designed building has plenty of outside space, including a completely remodelled entrance and atrium, to give a sense of community. Transport facilities are particularly good, with ample parking and bicycle racks.



SPECIFICATION INCLUDES

- VRF air conditioning
- Full access raised floors
- Suspended ceiling
- Showers and bike racks
- Two x 1,000kg capacity passenger lifts
- Manned reception
- 24 hour security on the Park
- EPC - D (94)



AVAILABLE SPACE

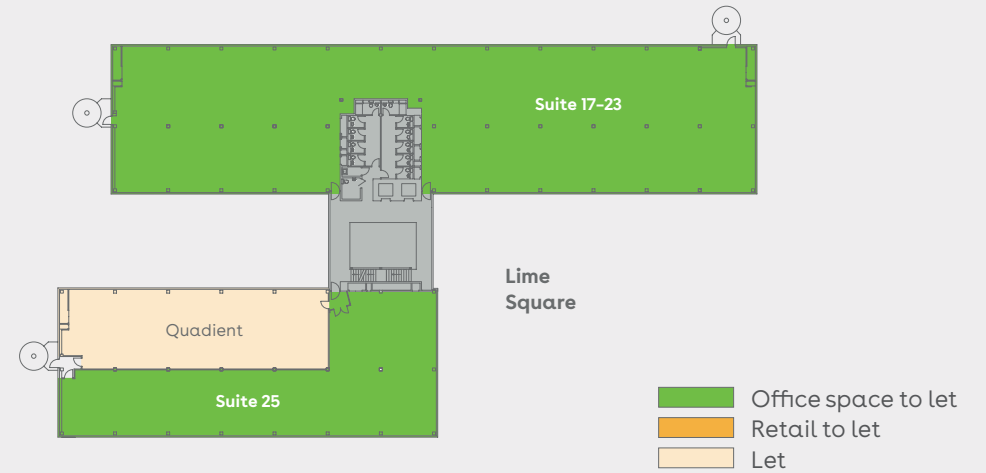


Schedule of availability		sq ft	sq m	Parking
Second floor	Suite 17-23	11,939	1,109	38
	Suite 25	4,594	427	14
First floor	Suite 8	5,302	493	17
Ground floor	Suite 7	7,655	711	24
Total		29,490	2,740	93

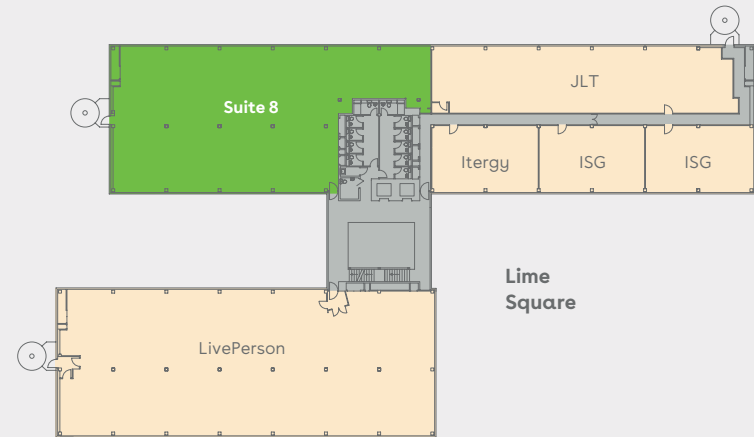
Current occupiers of 250 South Oak Way



Second floor



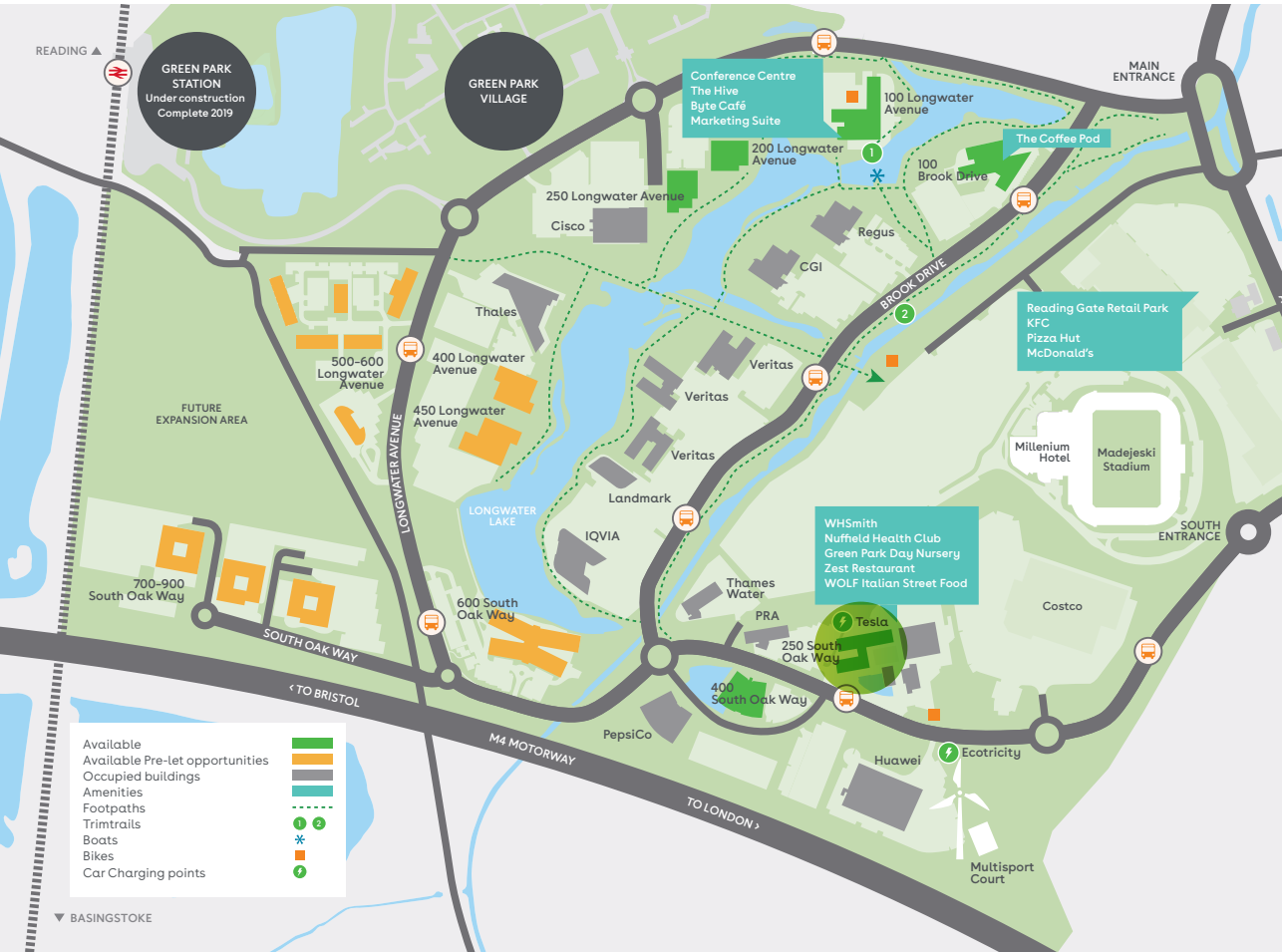
First floor



Ground floor



For indicative purposes only. Not to scale.



Find out more about bringing your business to Green Park. Contact our appointed leasing agents or visit: greenpark.co.uk

These particulars are not an offer or contract, nor part of one. Any information given is entirely without responsibility, October 2018.

a **maple**tree property



Charles Dady
+44 (0)20 7152 5273
+44 (0)7793 808 273

Henry Harrison
+44 (0)20 7152 5403
+44 (0)7785 222 430

Cameron Frazer
+44 (0)20 7152 5425
+44 (0)7710 965 302



Keith Wise
+44 (0)118 959 7555
+44 (0)7802 946 166

Alice Hilliard
+44 (0)118 959 7555
+44 (0)7557 280 885

Charlie Benn
+44 (0)118 959 7555
+44 (0)7551 159 738