

100 BROOK DRIVE
2,166-27,577 SQ FT



GreenPark 
a mapletree property

100 BROOK DRIVE

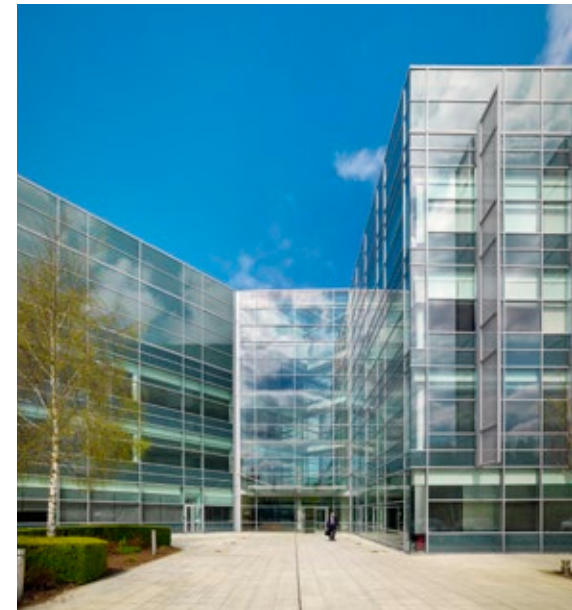
100 Brook Drive is a lakeside corporate headquarters which offers maximum impact. It's laid out neatly over four storeys around a full-height atrium.

The building is available for multi-let and benefits from great on-site amenities including The Coffee Pod.



SPECIFICATION INCLUDES

- Four pipe fan coil air conditioning system
- Fully accessible raised floors - 450mm void
- Finished floor to ceiling height 2.6m
- Suspended ceiling
- On-site car parking
- Showers and bike racks
- Three x 13 person glass scenic lifts
- One goods lift
- Manned reception
- Imposing full height atrium
- On-site coffee and light snack service point
- 24 hour security on the Park
- EPC - E (117)



AVAILABLE SPACE

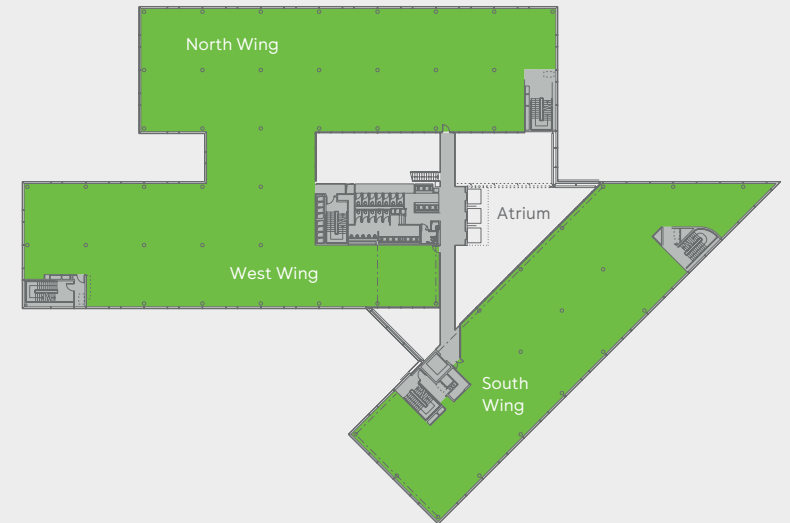


Schedule of availability		sq ft	sq m	Parking
Second floor	South Wing	5,516	512	23
	West Wing	7,029	653	30
Ground floor	North Wing A	3,669	341	15
	North Wing B	5,357	498	23
	South Wing	3,840	357	16
	West Wing	2,166	201	9
Total		27,577	2,562	116

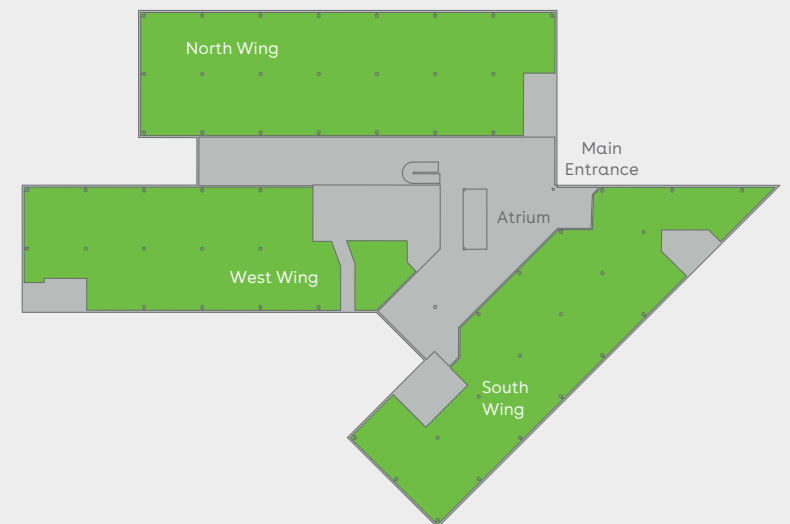
Current occupiers of 100 Brook Drive

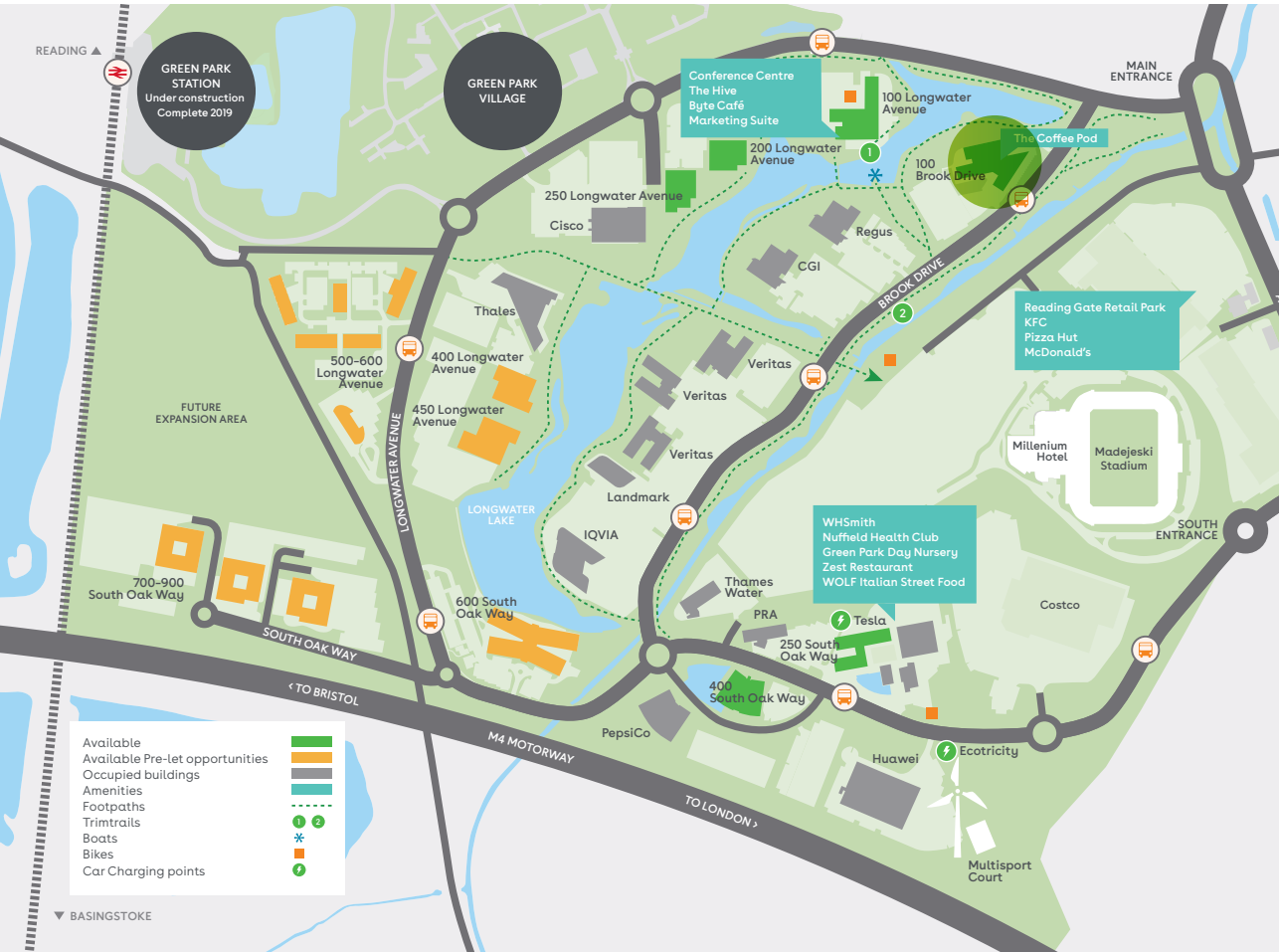


Second floor



Ground floor





Find out more about bringing your business to Green Park. Contact our appointed leasing agents or visit: greenpark.co.uk

These particulars are not an offer or contract, nor part of one. Any information given is entirely without responsibility, October 2018.

a **maple**tree property



Charles Dady
+44 (0)20 7152 5273
+44 (0)7793 808 273

Henry Harrison
+44 (0)20 7152 5403
+44 (0)7785 222 430

Cameron Frazer
+44 (0)20 7152 5425
+44 (0)7710 965 302



Keith Wise
+44 (0)118 959 7555
+44 (0)7802 946 166

Alice Hilliard
+44 (0)118 959 7555
+44 (0)7557 280 885

Charlie Benn
+44 (0)118 959 7555
+44 (0)7551 159 738