

**400 SOUTH OAK WAY**  
**9,737-19,643 SQ FT**



**GreenPark**   
a mapletree property

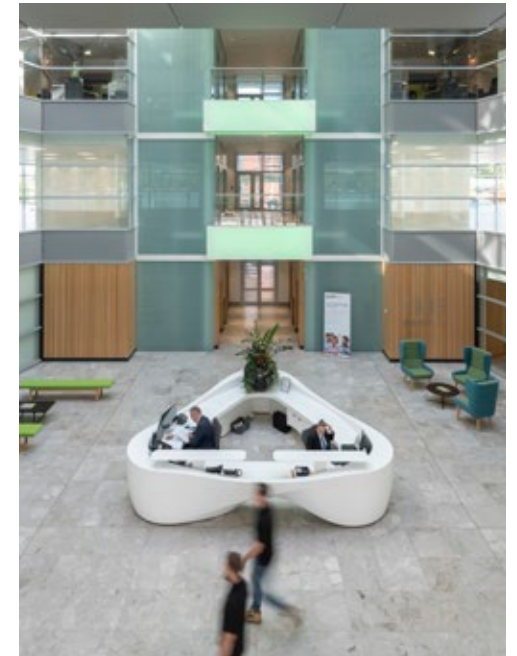




## 400 SOUTH OAK WAY

Overflowing with natural light from floor-to-ceiling windows, this versatile headquarters gives your staff an inspiring space to work.

It's highly visible from the M4 - amplifying your business presence.



### SPECIFICATION INCLUDES

- Four pipe fan coil air conditioning
- Fully accessible raised floors
- LED lighting
- Flexible range of CAT A finishes available
- 400 car parking spaces (1:247 sq ft)
- Showers and bike racks
- Four x 13 person glass scenic lifts
- One goods lift
- Imposing full height atrium
- 24 hour security on the Park
- BREEAM Excellent
- EPC - B



# AVAILABLE SPACE

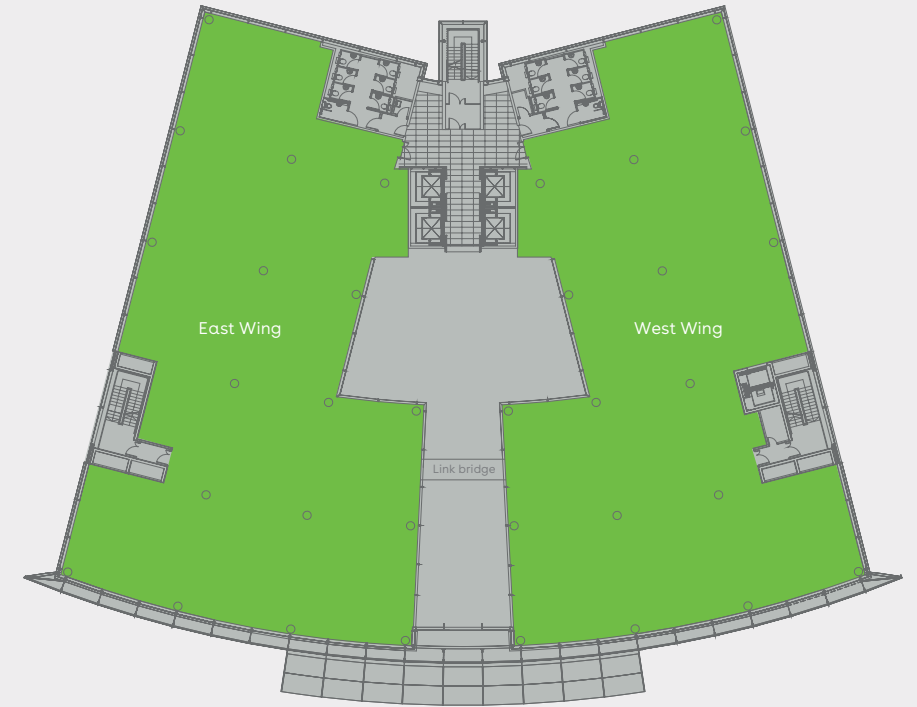


Schedule of availability		sq ft	sq m	Parking
First floor	East Wing	9,906	920	40
	West Wing	9,737	905	39
<b>Total</b>		<b>19,643</b>	<b>1,825</b>	<b>79</b>

Current occupiers of 400 South Oak Way

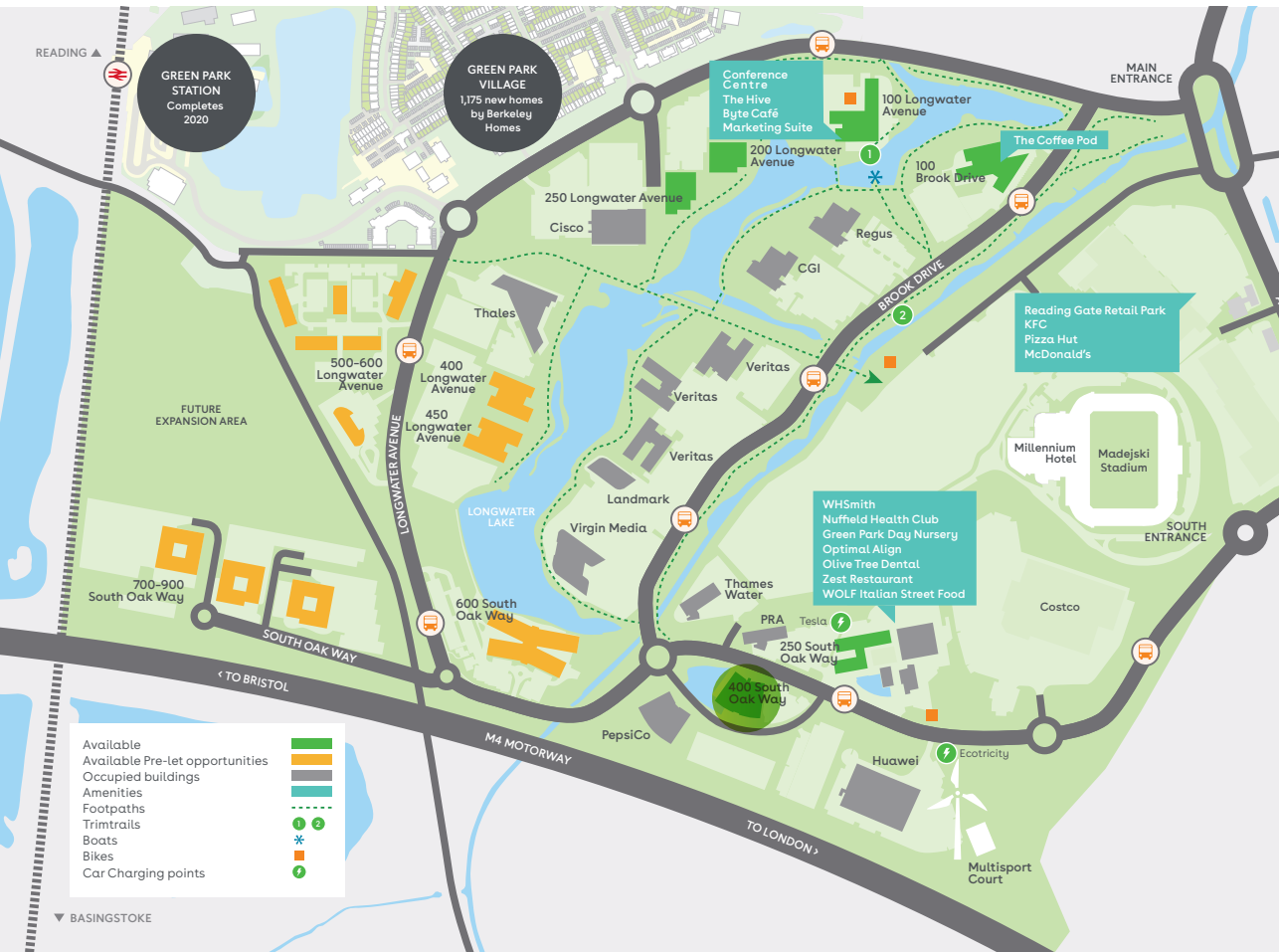


## First floor



For indicative purposes only. Not to scale.





**Charles Dady**  
 +44 (0)20 7152 5273  
 +44 (0)7793 808 273

**Henry Harrison**  
 +44 (0)20 7152 5403  
 +44 (0)7785 222 430

**Cameron Frazer**  
 +44 (0)20 7152 5425  
 +44 (0)7710 965 302



**Keith Wise**  
 +44 (0)118 959 7555  
 +44 (0)7802 946 166

**Duncan Campbell**  
 +44 (0)118 959 7555  
 +44 (0)782 734 1503

**Charlie Benn**  
 +44 (0)118 959 7555  
 +44 (0)7551 159 738

Find out more about bringing your business to Green Park. Contact our appointed leasing agents or visit: [greenpark.co.uk](http://greenpark.co.uk)

These particulars are not an offer or contract, nor part of one. Any information given is entirely without responsibility or warranty whatsoever. June 2019.