



250 Longwater Avenue

GreenPark

5,480 SQ FT



GreenPark

250

250 LONGWATER AVENUE

250 Longwater Avenue is a high specification office benefiting from beautiful views over Longwater lake.

The building is just a short walk from a number of amenities, including Byte café and the Conference Centre in 100 Longwater Avenue, while Green Park station, which completes next year, is also within easy walking distance. Comprehensively refurbished to provide Grade A office accommodation, the building offers large communal breakout space within the atrium.



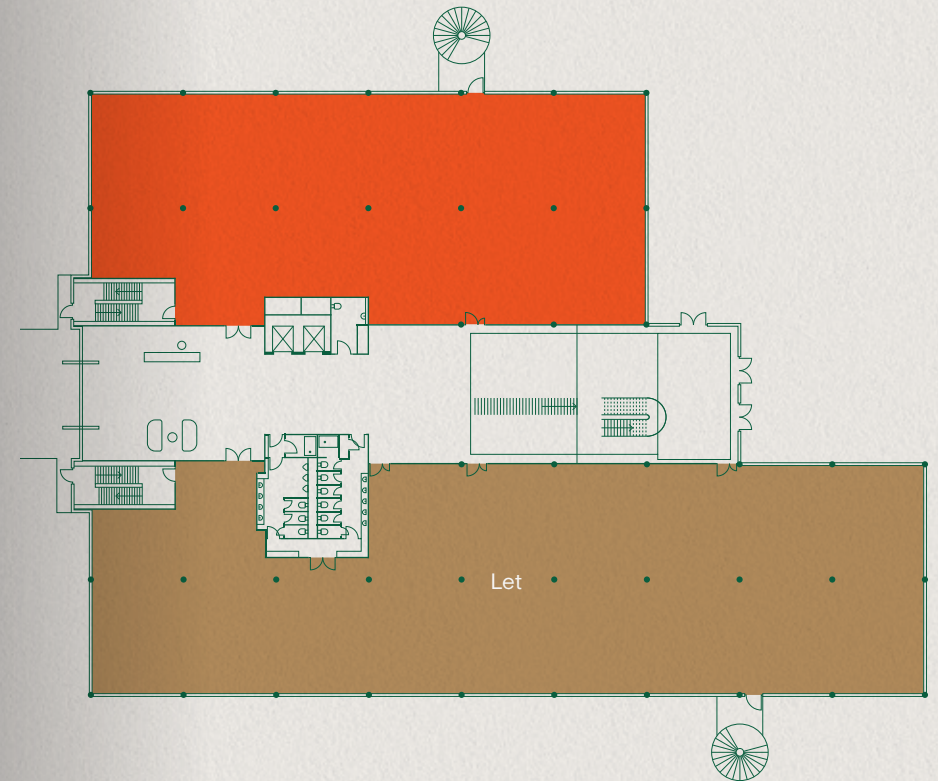
Specifications

- Four pipe fan coil air conditioning
- Fully accessed raised floors with 150mm void
- Finished floor to ceiling height 2.8m
- LG7 lighting
- Metal tile suspended ceiling
- Showers and bike racks
- Standby generator available
- Two x 10 person lifts
- Imposing double height glass atrium
- 24 hour security on the Park
- BREEAM Very Good
- EPC – B (46)

Current Occupiers:

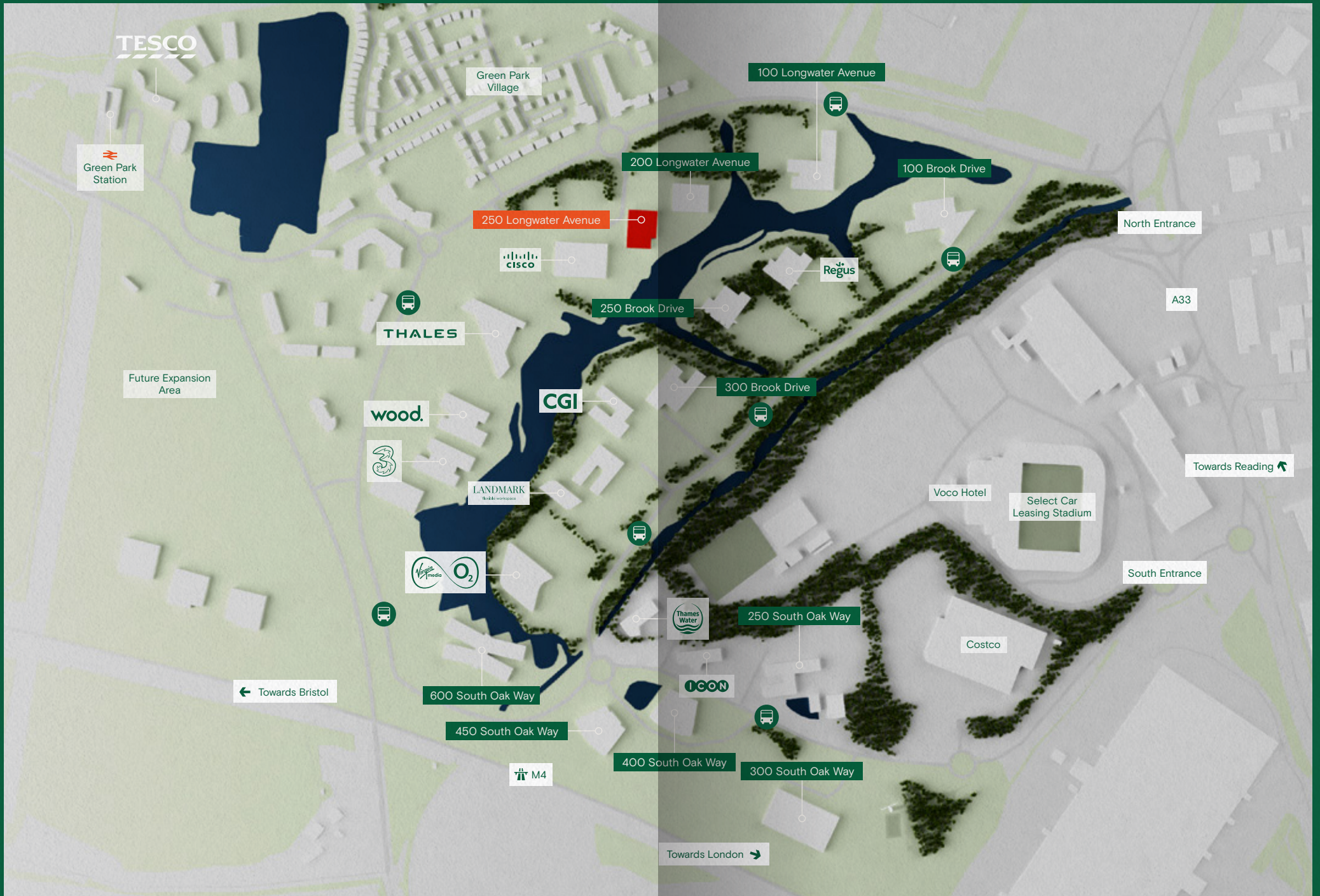


GROUND FLOOR



ACCOMMODATION

Schedule of availability	sq ft	sq m	Parking
Ground Floor – East Wing	5,480	509	22
Total	5,480	509	22





GreenPark

Find out more about bringing your business to Green Park.

Contact our appointed leasing agents or visit:

[Greenpark.co.uk](https://www.greenpark.co.uk)



Charles Dady
+44 (0)20 7152 5273
+44 (0)7793 808 273

Henry Harrison
+44 (0)20 7152 5403
+44 (0)7785 222 430

James Goodwin
+44 (0)20 7152 5016
+44 (0)7717 652 803



Jake Booth
+44 (0)118 959 7555
+44 (0)7714 388 044

Rob Marson
+44 (0)118 959 7555
+44 (0)7778 467 781

These brief particulars have been prepared as agents for our clients and are intended as a convenient guide to supplement an inspection or survey. Their accuracy is not guaranteed. They contain statements of opinion and in some instances we have relied on information provided by others. You should verify the particulars on your visit to the property and the particulars do not obviate the need for a full survey and all the appropriate enquiries. Accordingly, there shall be no liability as a result of any error or omission in the particulars or any other information given.

February 2024. Reference 2312015.